

# Town of Canterbury, New Hampshire

## Existing Zoning

**Legend**

 Town Boundary

 Property Boundaries

**Roads**

 Interstates

 Class I and II State Highways

 Class V Town Maintained Roads

 Class VI Unmaintained Roads

 Other Roads/Private

**Water Resources**

 Lakes and Ponds

 Rivers and Streams

 Intermittent Streams

**Zoning District**

 A - Agricultural/Conservation

 C - Commercial

 CHD - Center Historic District

 I - Industrial

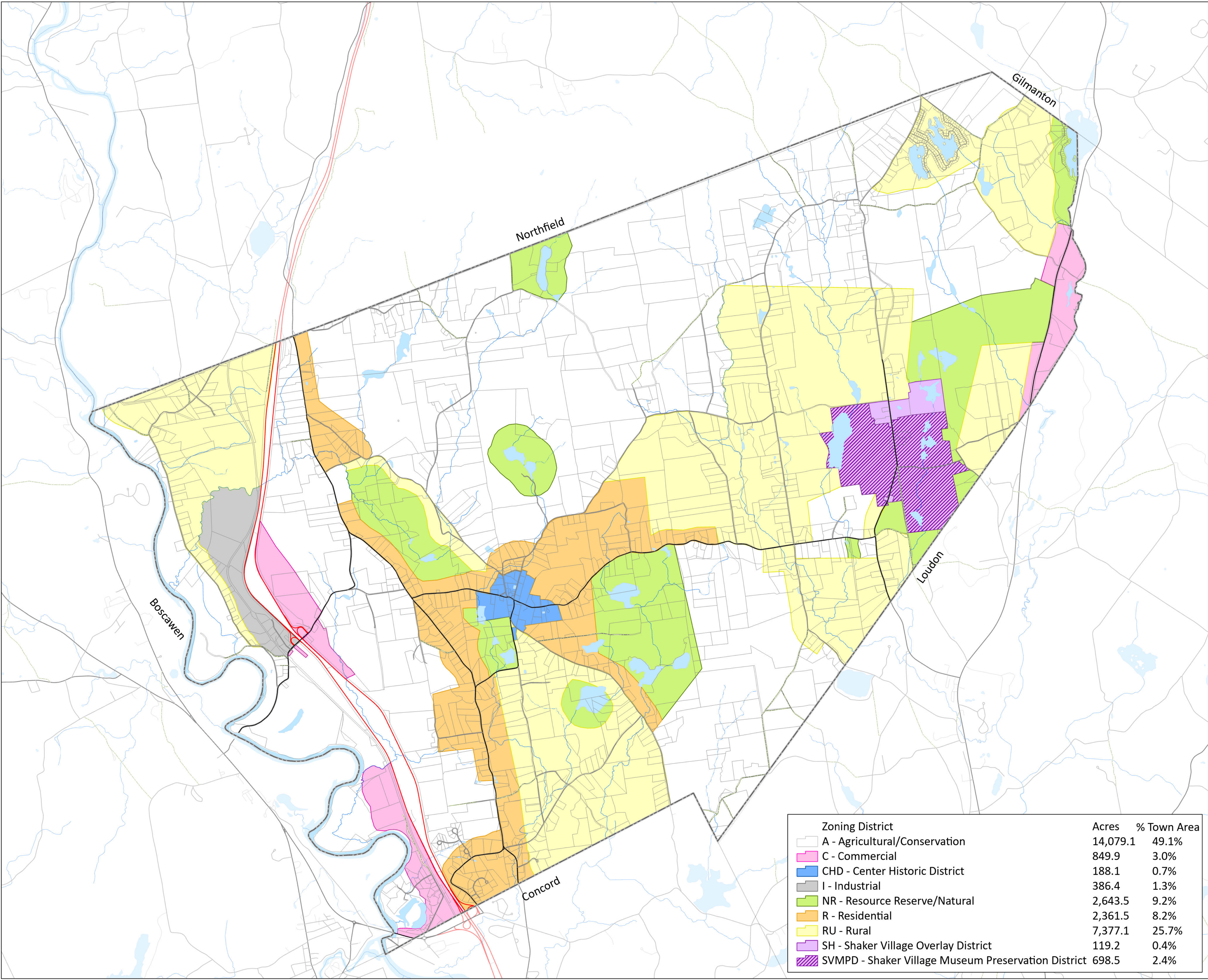
 NR - Resource Reserve/Natural

 R - Residential

 RU - Rural

 SH - Shaker Village Overlay District

 SVMPD - Shaker Village Museum Preservation District



Zoning District	Acres	% Town Area
A - Agricultural/Conservation	14,079.1	49.1%
C - Commercial	849.9	3.0%
CHD - Center Historic District	188.1	0.7%
I - Industrial	386.4	1.3%
NR - Resource Reserve/Natural	2,643.5	9.2%
R - Residential	2,361.5	8.2%
RU - Rural	7,377.1	25.7%
SH - Shaker Village Overlay District	119.2	0.4%
SVMPD - Shaker Village Museum Preservation District	698.5	2.4%

This map was produced by the Central NH Regional Planning Commission for the Town of Canterbury Natural Resources mapping. Updated December 6, 2022. It is intended for planning purposes only. Data Sources: NH GRANIT, NH Dept. of Environmental Services, NH Dept. of Transportation, CNHRPC, Town of Canterbury, Conservation Committee Input. Corrections should be provided to the Town of Canterbury and to CNHRPC.

