

Phone 603 798-4419 Fax 603 798-4263  
 www.avitarassociates.com  
 Terramap@avitarassociates.com

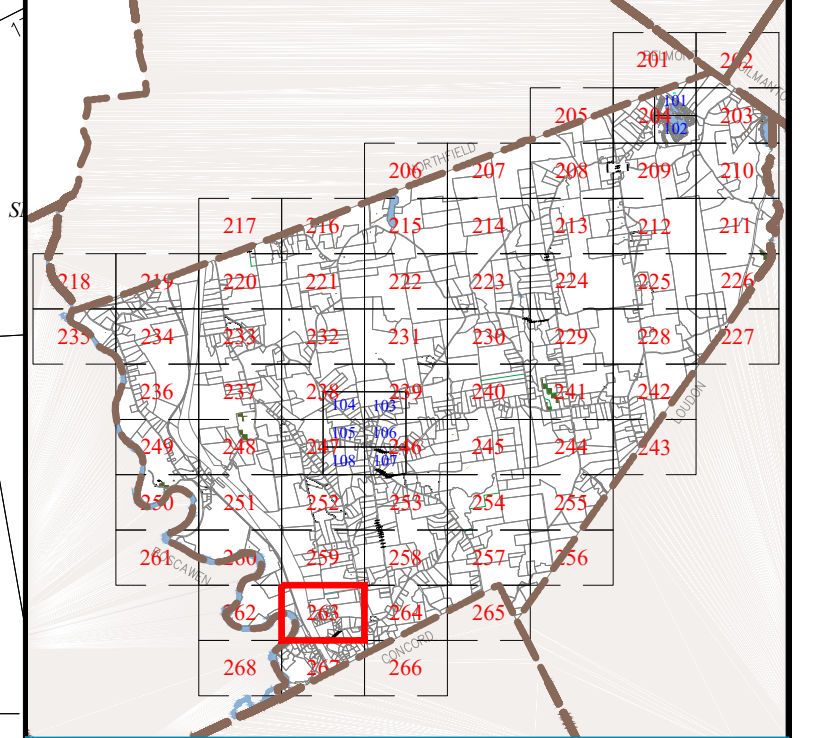
# Town of CANTERBURY

Merrimack County  
New Hampshire

## LEGEND

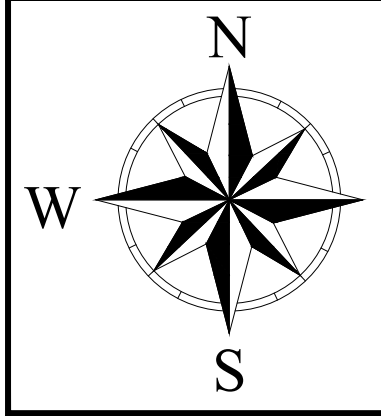
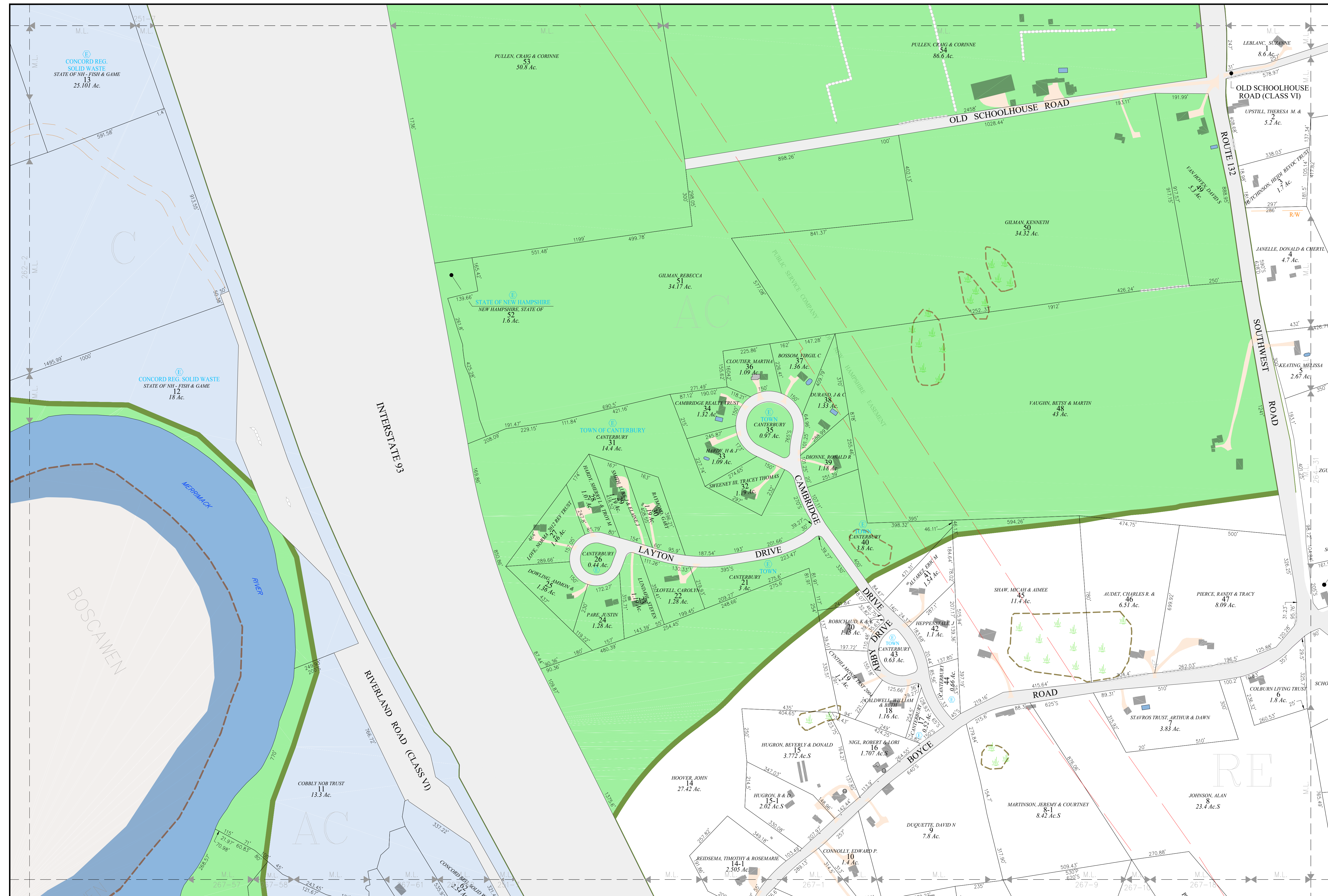
- Lot-Sub 12-1
  - Acreage 200 AcS
  - S-Survey C-Calculated
  - Dimensions (Feet) 150.00'
  - Private & ROW Access
  - River
  - Wetland
  - Lake or Pond
  - Transmission Line
  - Conservation Easement
  - Exempt Property
  - Town Owned Land
  - Open Space
  - Structure
- ## ZONING
- Residential
  - Rural
  - Agricultural-Conservation
  - Commercial
  - Industrial
  - Natural Resource
  - Center Historic District
  - Shaker Historic Overlay District
  - Shaker Village Museum Preservation District

## MAP INDEX



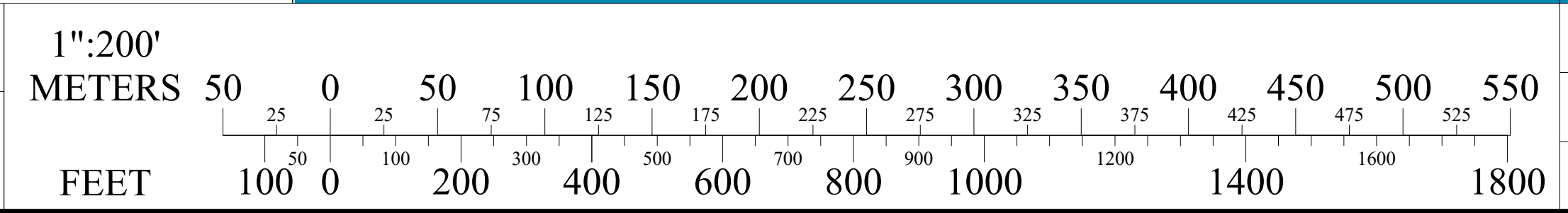
## MAP NUMBER

# 263



THE HORIZONTAL DATUM IS THE NEW HAMPSHIRE STATE PLANE COORDINATE SYSTEM, NAD 83.  
 FOR ASSESSMENT PURPOSES  
 NOT TO BE USED FOR CONVEYANCES  
**REVISED APRIL 1, 2023**

## SCALE



## MAP NOTES