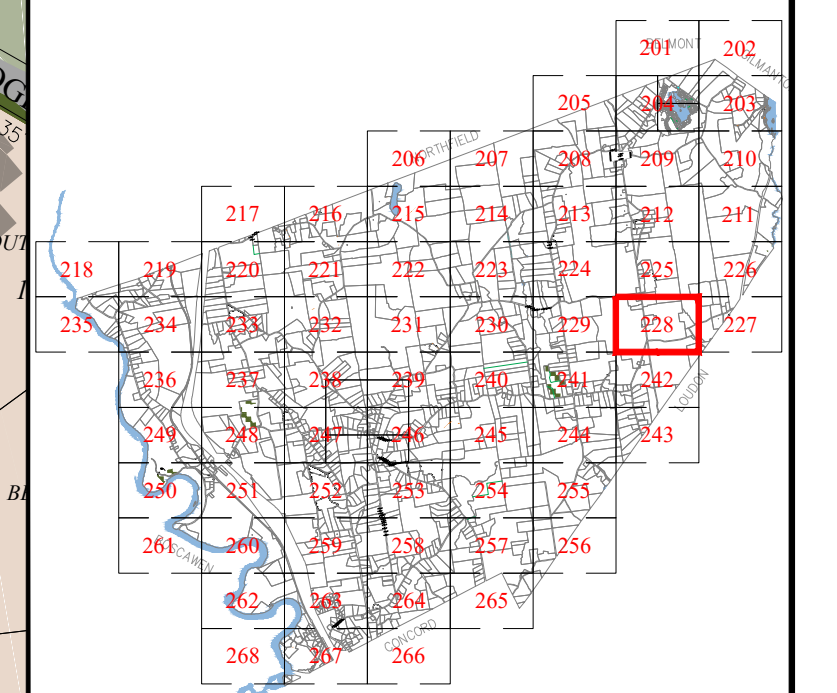


Town of
CANTERBURY
 Merrimack County
 New Hampshire

LEGEND

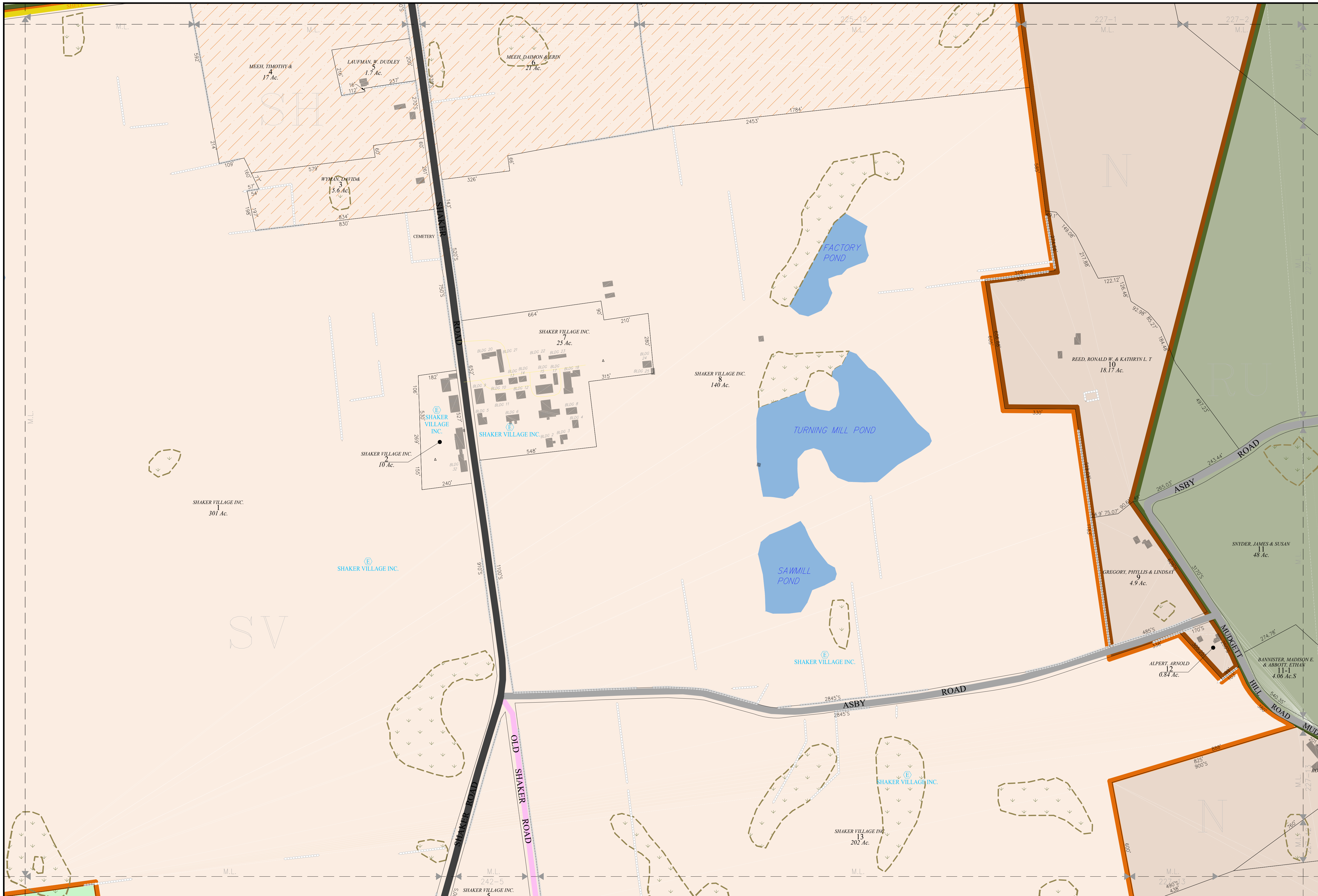
- | | |
|-----------------------|----------|
| Lot-Sub | 12-1 |
| Acreage | 200 Ac.S |
| S-Survey C-Calculated | |
| Dimensions (Feet) | 150.00' |
| Private & ROW Access | |
| River | |
| Wetland | |
| Lake or Pond | |
| Transmission Line | |
| Conservation Easement | |
| Exempt Property | |
| Town Owned Land | |
| Open Space | |
| Structure | |
- ZONING**
- | | |
|---|--|
| Residential | |
| Rural | |
| Agricultural-Conservation | |
| Commercial | |
| Industrial | |
| Natural Resource | |
| Center Historic District | |
| Shaker Historic Overlay District | |
| Shaker Village Museum Preservation District | |
- ROADS**
- | | |
|-----------------------------|--|
| Interstates | |
| State Highways (Class I&II) | |
| Town Maintained (Class V) | |
| Unmaintained (Class VI) | |
| Private | |
| Discontinued | |
| Discontinued (Gates&Bars) | |

MAP INDEX

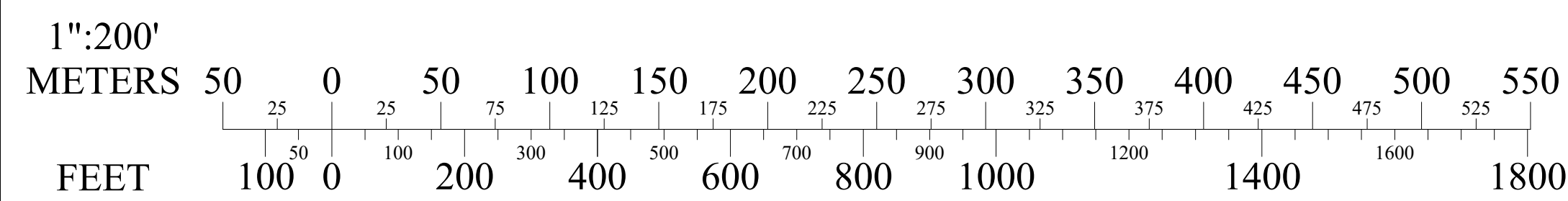


MAP NUMBER

228



SCALE



MAP NOTES

THE HORIZONTAL DATUM IS THE NEW HAMPSHIRE STATE
 PLANE COORDINATE SYSTEM, NAD 83.
 FOR ASSESSMENT PURPOSES
 NOT TO BE USED FOR CONVEYANCES
REVISED APRIL 1, 2025

