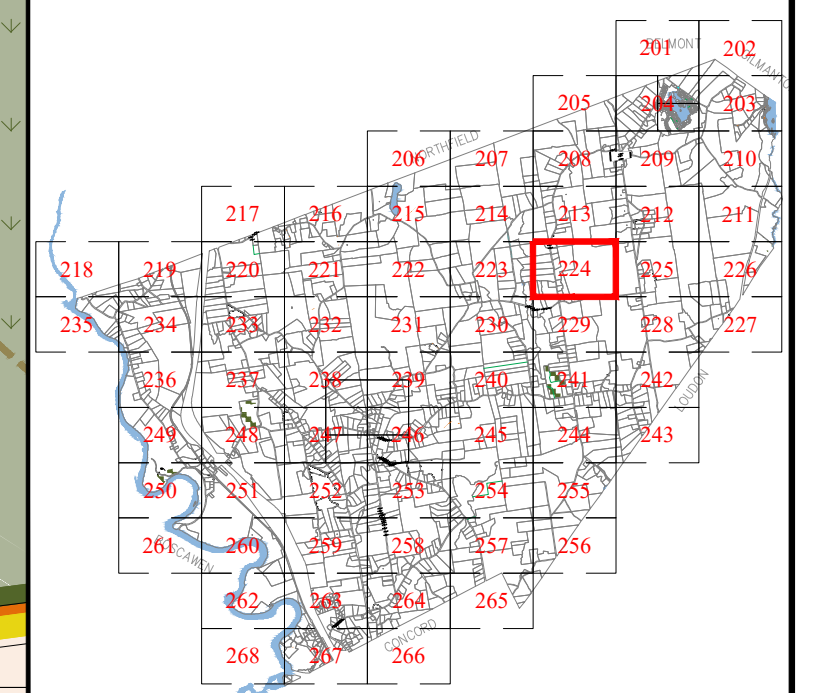


Town of
CANTERBURY
 Merrimack County
 New Hampshire

LEGEND

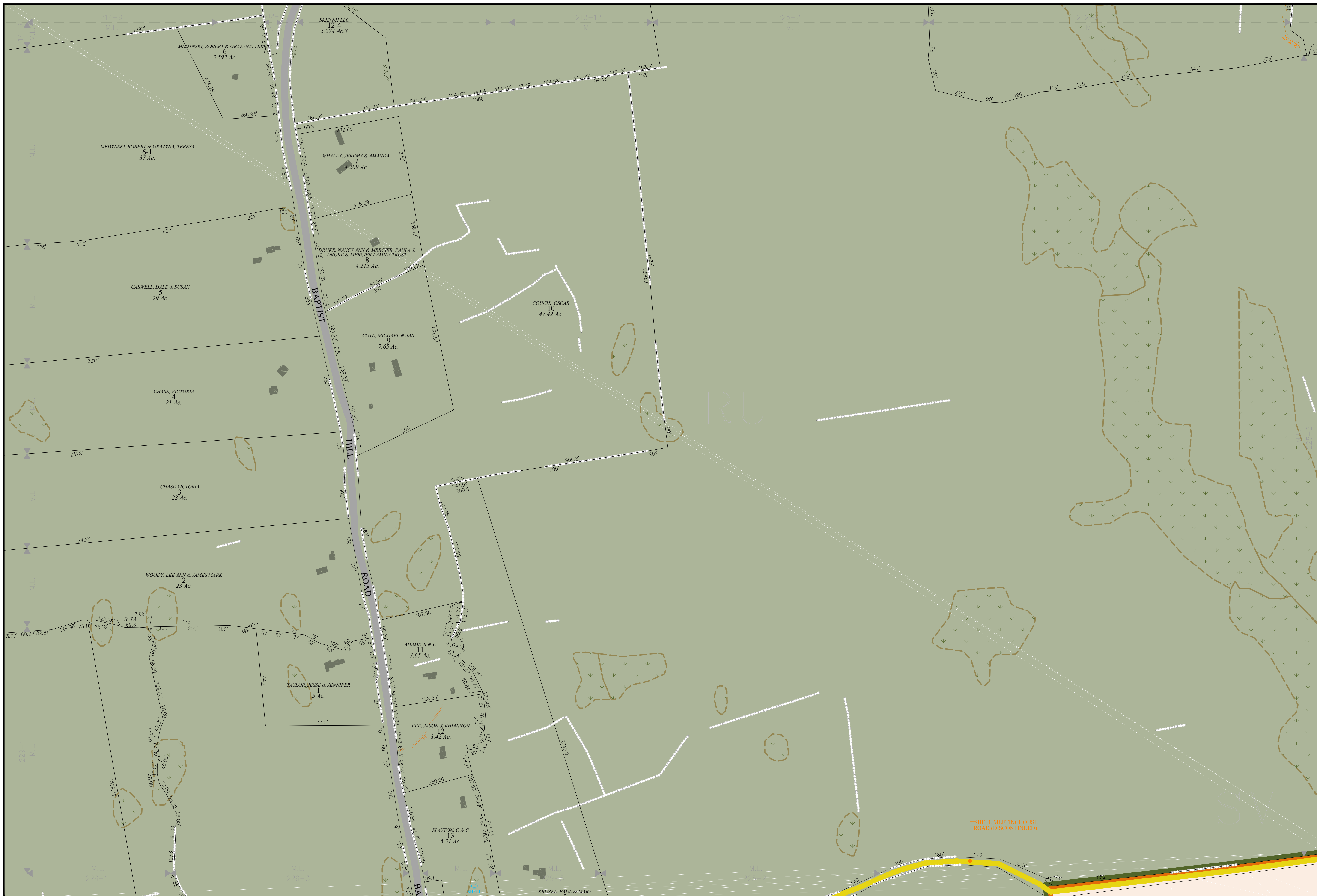
Lot-Sub	12-1
Acres	200 AcS
S-Survey C-Calculated	
Dimensions (Feet)	150.00'
Private & ROW Access	
River	
Wetland	
Lake or Pond	
Transmission Line	
Conservation Easement	
Exempt Property	
Town Owned Land	
Open Space	
Structure	
ZONING	
Residential	
Rural	
Agricultural-Conservation	
Commercial	
Industrial	
Natural Resource	
Center Historic District	
Shaker Historic Overlay District	
Shaker Village Museum Preservation District	
ROADS	
Interstates	
State Highways (Class I&II)	
Town Maintained (Class V)	
Unmaintained (Class VI)	
Private	
Discontinued	
Discontinued (Gates&Bars)	

MAP INDEX

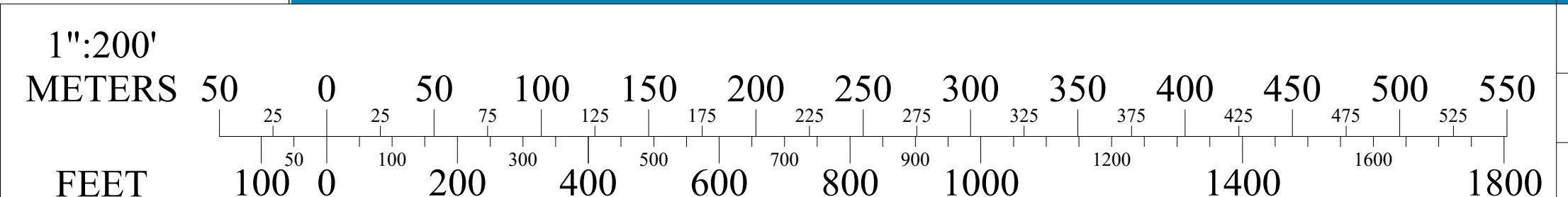


MAP NUMBER

224



SCALE



MAP NOTES

THE HORIZONTAL DATUM IS THE NEW HAMPSHIRE STATE
 PLANE COORDINATE SYSTEM, NAD 83.
 FOR ASSESSMENT PURPOSES
 NOT TO BE USED FOR CONVEYANCES
REVISED APRIL 1, 2025

